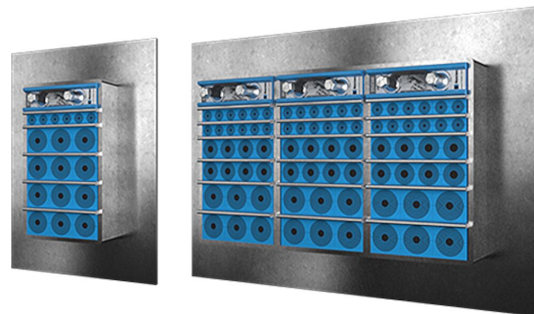




# Roxtec G-gennemføring

Gennemføring med flange, til svejsning.

Roxtec G er en kabel- og rørtætning med stålramme, til svejsning. Rammen kan anvendes sammen med en GE forlængerramme i galvaniseret stål, til at dække hele dybden af en tyk væg.



- Har indbygget reservekapacitet

## Produktegenskaber



Brandklassificeret



Vandtæt



Gas-tæt

## Byggekonstruktion



El-skabe og kabinetter



Metal

## Monteringstype



Svejsning

## Normeringer og certifikater

### Brand

- A-KLASSE i henhold til IMO 2010 FTP-kode
- E/EI-klassificering i henhold til EN 13501
- F/T-klassificering i henhold til UL 1479

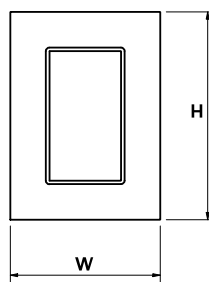
### Tæthed

- Gas: 2,5 bar (katastrofe)
- Vand: 4 bar (katastrofe)

## Rammedimensioner

mm/kg

De nedenstående rammevarianter udgør et begrænset udvalg. Du kan se hele udvalget af rammer og konfigurationer på [roxtec.com](https://www.roxtec.com).

	Title	Rammeåbninger	Pakkeareå	Udvendige mål WxHxD	Åbningsmål w x h	Vægt	Art.-nr.
	G 6x1 PRIMED	1	120 x 180	252.5 x 350 x 60	188(+15/-15) x 290(+15/-15)	4.4	G006000000112
	G 6x2 PRIMED	2	120 x 180	383 x 350 x 60	318(+15/-15) x 290(+15/-15)	7.4	G006000000212
	G 6x3 PRIMED	3	120 x 180	513.5 x 350 x 60	449(+15/-15) x 290(+15/-15)	9.8	G006000000312
	G 6x1 AISI316	1	120 x 180	252.5 x 350 x 60	188(+15/-15) x 290(+15/-15)	4.8	G006000000121
	G 6x2 AISI316	2	120 x 180	383 x 350 x 60	318(+15/-15) x 290(+15/-15)	7.3	G006000000221
	G 6x3 AISI316	3	120 x 180	513.5 x 350 x 60	449(+15/-15) x 290(+15/-15)	9.8	G006000000321



## Data om tætningskomponenter

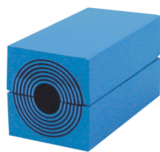
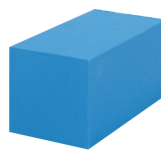
### Tætningskomponenter



Lubrikant



wedge og wedgekit

RM-modul med  
Multidiameter™RM fast  
kompensationsmodul

Stayplate



holderværktøj



svejeværktøjer



tætningskit

For mer information, besøg venligst [roxtec.com](https://www.roxtec.com).

The product information provided by Roxtec does not release the purchaser of the Roxtec system, or part thereof, from the obligation to independently determine the suitability of the products for the intended process, installation and/or use.

Roxtec gives no guarantee for the Roxtec system or any part thereof and assumes no liability for any loss or damage whatsoever, whether direct, indirect, consequential, loss of profit or otherwise, occurred or caused by the Roxtec systems or installations containing components not manufactured by an authorized manufacturer and/or occurred or caused by the use of the Roxtec system in a manner or for an application other than for which the Roxtec system was designed or intended.

Roxtec expressly excludes any implied warranties of merchantability and fitness for a particular purpose and all other express or implied representations and warranties provided by statute or common law. User determines suitability of the Roxtec system for intended use and assumes all risk and liability in connection therewith. In no event shall Roxtec be liable for indirect, consequential, punitive, special, exemplary or incidental damages or losses.

The Roxtec products are offered and sold in accordance with the conditions of the Roxtec General Terms of Sales. The latest version of the Roxtec General Terms of Sales can be downloaded from <https://www.roxtec.com/en/about-us/about-roxtec/general-terms-of-sales/>

We reserve the right to make changes to the product and technical information without further notice. Any errors in print or entry are no claims for indemnity. The content of this publication is the property of Roxtec International AB and is protected by copyright.

This document was generated on: 2024-04-12